

North Wheatland Township Homeowners Association

2014 Directory



1974 -2014

40 Years of Community Service

P.O. Box 9602 • Naperville, IL • 60567

www.nwtha.com



Thomas Clow
Wheatland Riverview Farmstead
Circa. 1850

G & C

Septic and Sewer Services

Family owned and operated

For your pumping , rodding and minor repairs call

(630) 750 - 7667

A&G Rental

**We Rent & Repair
Most Everything**

*Authorized Briggs & Stratton,
Tecumseh & Honda Dealer
Parts & Service*

RV Rental & Repairs

630-820-0770

*Open Mon-Sat, Closed Sunday
10S241 Schoger Drive, Naperville
(Behind White Eagle,
off Montgomery Road)*

\$10.00 Off

**With This Ad (Repairs Only)
Good thru 1/31/2015**

Traverso's

NAPERVILLE

**Mama Traverso's
Italian Specialties**

**Famous Pullman Thin-Crust Pizza
Ribs • Seafood • Sandwiches**

*Open Daily 4 p.m.
Sundays at Noon*

- Carry-Out
- Delivery
- Catering

9100 S. Naperville-Plainfield Rd.

305-7747

General Information

WHEATLAND TOWNSHIP (www.wheatlandtownship.com)

Offices located at: 4232 Tower Court (east of
Rte. 59, south from 103rd)
Hours: M-F, 8 a.m. - 4:30 p.m. Naperville, IL 60564
331-229-3917

Supervisor: *Chuck Kern*
331-229-3917, 561-7774 (h)
Administrative Assistant *Carolyn Rominger, 331-229-3917*
General Assistance *Chuck Kern, 331-229-3917*

Clerk: *Bill Alstrom,*
331-229-3917, 853-1652 (h)

Tax Collector: *Ben Peterson*
851-3952

Board of Trustees:

Darren Bennefield 312-479-8478 *Mike Crockett* 416-6441 *Deb Holscher* 369-8452 (c) *Raquel Mitchell* 936-9578

Town Board Meetings: 7:30 p.m. on second Thursday of the month at
Township Office Building, 4232 Tower Court (103rd & Route 59),
Naperville

Tax Assessor's Office: 12337 S. Rte. 59, Suite 111
Hours: M-F, 8 a.m. to 4:30 p.m. Plainfield, IL 60564
(moving to Tower Road office
building in mid-2014)

Tax Assessor 815-782-6366 (office)
Dave Monaghan 815-600-2717

Highway Department Office: 4232 Tower Court (south from
Hours: M-F, 7 a.m. to 3 p.m. 103rd, just east of Rte. 59)
Naperville, IL 60564

Highway Commissioner: 717-0092 (office)
Mark Troyanowski 514-5502 (cell, after hours)

WILL COUNTY (www.willcountyllinois.com)

Hours: Most County offices open M-F, 8:30 a.m. to 4:30 p.m.

Offices located at: 14 W. Jefferson Street
Joliet, IL 60432

Sheriff: *Paul Kaupas*
815-727-8895

Clerk of the Circuit Court: *Pamela McGuire*
815-727-8592

Offices located at: 121 N. Chicago Street
Joliet, IL 60432

State's Attorney: *James W. Glasgow*
815-727-8453

Offices located at: 57 N. Ottawa St., Suite 412
Joliet, IL 60432

Coroner: *Patrick K. O'Neil*
815-727-8455

Offices located at: 302 N. Chicago Street
Joliet, IL 60432

Clerk: *Nancy Schultz Voots*
815-740-4615

Assessor: *Rhonda R. Novak*
815-740-4648

Treasurer: *Steve Weber*
815-740-4675

Auditor: *Duffy Blackburn*
815-740-4609

County Executive: *Lawrence M. Walsh*
815-740-4601

Offices located at: 58 E. Clinton Street
Joliet, IL 60432

Recorder of Deeds *Karen A. Stukel*
815-740-4637

Environmental Health
(Well-water, septic-field testing)

501 Ella Avenue
Joliet, IL 60433
815-727-8490, 815-727-8517 (lab)

Land Use/Waste Services
(Leaf-Burning, Recycling)
(www.willcountygreen.com)

58 E. Clinton St., Suite 500
Joliet, IL 60432

Dean Olson, Eric Fasbender,
Dave Hartke, Marta Keane
815-727-8834

Highway Department
Hours: M-F, 8 a.m. to 4 p.m.

16841 W. Laraway Road
Joliet, IL 60433

County Engineer:

Bruce Gould
815-727-8476

Forest Preserve District
(www.fpdwc.com)
Hours: M-F, 8 a.m. to 4 p.m.

17540 W. Laraway Road
Joliet, IL 60433

Executive Director:

Marcy DeMauro
815-727-8700

Will County Board of Supervisors (13 districts, 26 members – 2 from each district)

County Executive:

Larry Walsh
815-774-7480

District 11

Chuck Maher
1267 Hearthiside Court
Naperville, IL 60564
642-2616 (Cell)
357-0585 (H)

Suzanne Hart
3707 Celeste Lane
Naperville, IL 60564
904-4370 (H)
745-7783 (Cell)

County Board Meetings: 9:30 a.m. on third Thursday of each month in Board Room at Will County Office Building, 2nd Floor, 302 N. Chicago Street, Joliet, Ill. Agenda on-line. For info, call **815-740-4602**.

CITY OF NAPERVILLE (www.naperville.il.us)

Offices located at:

Hours: M-F, 8 a.m. to 5 p.m.

**400 S. Eagle Street
Naperville, IL 60566
420-6111**

Mayor: *George Pradel*
420-6018, 355-5614(h)

City Council:

Joseph J. McElroy
305-5334

Dave Wentz
305-5318

Judith Brodhead
305-5335, 961-3556

Douglas Krause
305-5332, 961-2713

Robert W. Fieseler
305-5333, 417-7553 (Cell)

Paul Hinterlong
305-5362, 778-8239

Steve Chirico
305-5336

Grant Wehrli
305-5331, 717-6517

City Council Meetings: 7 p.m., 1st & 3rd Tuesdays of each month in the Municipal Center Council Chambers, 400 S. Eagle St., Naperville. For more info, call **548-2983**.

Planning & Zoning Commission – 9 members, including *Patty Gustin (Chair), Greg Bruno, Kevin Coyne, Steve Frost, Sean Hastings, Timothy Messer, Patricia Meyer, Tom Dabareiner, and Bob Williams*

Planning & Zoning Commission Meetings: 7 p.m., 1st & 3rd Wednesdays of each month in Municipal Center Council Chambers, 400 S. Eagle St., Naperville. For more info, call **420-6081**.

City Manager:

Doug Krieger
420-6044

Public Works Director:

Dick Dublinski
420-6752, 6095

**Community Planning
& Development:**

Bill Novack Allison Laff
420-6704 420-6107

**Transportation
& Engineering:**

Kim Grabow Schmidt
548-1199

Naperville Park District: 320 W. Jackson Street, Naperville
8:30-5 M-F, 9-12 Sat 848-5000
(www.napervilleparks.org)

Executive Director: Ray McGury, 848-3500/02
Centennial Beach 848-5092

STATE OF ILLINOIS (www.illinois.gov)

Governor:

Patrick Quinn [D] 217-782-6830/1/2
207 State House
Springfield, IL 62706

100 W. Randolph Street, 16th Floor 312-814-2121
Chicago, IL 60601

State Senator (21st District):

Michael Connelly [R] 682-8101
1725 S. Naperville Road, Suite 200
Wheaton, IL 60189

M-103 E State House 217-782-8192
Springfield, IL 62706

State Representative (41st District):

Darlene Senger [R] 420-3008
401 S. Main Street, Suite 300
Naperville, IL 60540

211-N Stratton Office Building 217-782-6507
Springfield, IL 62706

U.S. Representative (11th District):

Bill Foster [D]
195 Springfield Ave., Suite 102, Joliet, IL 60433 815-280-5876
2711 E. New York St., Suite 204, Aurora, IL 60502 630-585-7672

1224 Longworth House Office Building 202-225-3515
Washington, D.C. 20515

U.S. Senators:

Richard J. Durbin [D] **312-353-4952**
230 S. Dearborn St., Suite 3892
Chicago, IL 60604
332 Dirksen Senate Office Building **202-224-2152**
Washington, D.C. 20510

Mark Kirk [R] **312-886-3506**
230 S. Dearborn St., Suite 3900
Chicago, IL 60604
387 Russell Senate Office Building **202-224-2854**
Washington, D.C. 20510

VOTER INFORMATION

Precincts of NWTHA Members (Wheatland Township):

- #5 – Residents of Shell Lake & west side of Book Road
- #6 – Residents of Country View Estates, Wheatland View (north side & north of Leverenz Rd and east of Book Rd, incl. Acorn Estates)
- #7 – Residents of Sunset Ridge
- #9 – Residents of Wheatland View (south side and south of Leverenz, and east of Book, including Curtis, Davidson and Joyce)
- #10 – Residents of River Crest & on Knoch Knolls Road, Mayfield Ct.

Polling Places:

- Precinct #5 – Stillwater Clubhouse, 2308 87th Street
- Precinct #6 – Clow Elementary School, 1301 Springdale Circle
- Precinct #7 – Breckenridge Clubhouse, 2852 Breckenridge Lane
- Precinct #9 – Gregory Middle School, 2621 Springdale Circle
- Precinct #10 – Breckenridge Clubhouse, 2852 Breckenridge Lane

Precinct Committeemen/women/Voter Registrars*:**

- #5 – ***Mark Troyanowski (R), 2408 Foxboro Ln., Naperville, 399-5739
- #6 – ***Scott Bishop (R), 10S060 Alago Rd., Naperville, 788-9910
- #6 – ***Betty Mercado (D), 1320 Peshtigo Ave., Naperville, 267-9045
- #7 – ***John Nania (R), 716 Colorado Ct., Naperville, 416-8300
- #9 – ***Kathy Havel (R), 2616 Springdale Circle, Naperville, 460-7305
- #9 – Tom Verdone (D), 23155 Joyce Lane, Naperville, 854-0678
- #10 – ***Debra Holscher (R), 2708 Modaff Rd., Naperville, 369-8452
- #10 – ***Hale Landes (D), 2803 Breckenridge Ln., Naperville, 853-9056

***Voter Registrar

INDIAN PRAIRIE COMMUNITY UNIT SCHOOL DISTRICT 204

Crouse Administrative Center/Board of Education Office **375-3000**
780 Shoreline Drive, Aurora, IL 60504

Directions: *Take Book Road or Route 59 to 83rd St., go west on 83rd to Frontenac Rd., turn right, go north to 2nd (northernmost) entrance to Shoreline Dr., turn right. Offices are ½ mile east on left side of road.*

Administration:

Dr. Kathryn Birkett, Superintendent
Kathy Duncan, Chief Academic Officer
Jay Strang, Assistant Superintendent, Business
Karen Sullivan, Assistant Superintendent, Human Resources
Linda Rakestraw, Assistant Superintendent/Secondary Ed
Kathy Pease, Assistant Superintendent, Elementary Teaching/Learning
Stan Gorbatkin, Assistant Superintendent, Technology Services
Patrick Nolten, Executive Director, Research & Assessment
Pam Shaw, Executive Director, Student Services
Kathy Kosteck, Director, Student Services
Stacey Gonzales, Director, Instructional Technology
Allison Sherman, Director, Core Curriculum (K-8)
Joshua Ruland, Director, Core Curriculum (9-12)
Todd DePaul, Director, Building Operations
Tim Keeley, Director, Support Services (Buses, Building Rental)
Janet Buglio, Executive Director, Communication Services
Jason Altenbern, Coordinator, Community Relations

Schools: *(Due to the large number of District 204 schools, we only have room to list those where NWTHA kids go to school. For information on the other schools, call 375-3000 or visit www.ipsd.org)*

Neuqua Valley High School

2360 95th Street

Naperville, IL 60564

428-6000

Robert McBride Jr., Principal

Neuqua Valley Gold Campus

3220 Cedar Glade Drive

Naperville, IL 60504

428-6410

David Perry, Asst. Principal

Gordon Gregory Middle School

2621 Springdale Circle

Naperville, IL 60564

428-6300

Stephen Severson, Principal

Scullen Middle School (Shell Lake)

2815 Mistflower Lane (off 103rd St)

Naperville, IL 60564

428-7000

Mark Truckenbrod, Principal

Robert E. Clow Elem. School

1301 Springdale Circle
Naperville, IL 60564

428-6060

Sarah Nowak, Principal

Arlene Welch Elem. School

2620 Leverenz Road (Shell Lake)
Naperville, IL 60564

428-7200

Joan Peterson, Principal

Prairie Children Preschool (early childhood education)

780 Shoreline Drive
Aurora, IL 60504

375-3030

Sally Osborne, Principal

Board of Education:

Lori Price, President

173 Birchdale Lane
Aurora, IL 60504

499-9876

Mike Raczak

2340 Cheshire Drive
Aurora, IL 60502

421-0714

Cathy Piehl, Vice President

1409 Greenlee Court
Naperville, IL 60540

548-5717

Justin Karubas

3124 Brossman Street
Naperville, IL 60564

922-0820

Benjamin White, Secretary

3027 Forest Creek Court
Naperville, IL 60565

913-706-9451, 355-9443

Dr. Maria Curry

3691 Monarch Circle
Naperville, IL 60564

851-8809

Mark Rising

2493 Glenford Lane
Aurora, IL 60502

236-7454

Board of Education Meetings: About 7 p.m. on the first & third or second & fourth Mondays of most months, on the second floor of the Crouse Administrative Center, 780 Shoreline Drive, Aurora. Call **375-3010** or go to the District 204 website – **www.ipisd.org** – for meetings schedule, agendas and minutes, plus other information.

Emergency Services

AMBULANCE: Dial **9-1-1** – Naperville Fire Department paramedics

FIRE: Dial **9-1-1**

We're in the **Naperville Fire Protection District**.

- Naperville Fire Chief is Mark Puknaitis: **420-6140/1**
- NWTHA President Ken Hagenbaumer (**983-7785**) also is president of the Fire Protection District's Board of Trustees

Non-emergency calls: **420-6142**

POLICE: Dial **9-1-1** in **EMERGENCY** situations

Unincorporated areas of Will County, such as ours, are served by the County Sheriff's Department. But City of Naperville police officers will respond first (to emergencies) if they are closer.

Non-emergency calls should go through the *Sheriff's Dispatcher* – **630-904-1230** or **1-815-727-8575**

ELECTRICITY: **Commonwealth Edison**

- Report all power failures by calling **1-800-334-7661**.
- If you have a question, complaint or compliment, call Com Ed's external affairs (community relations) department at **723-2311** – 8 a.m. to 4:30 p.m., Mon. - Fri.

NATURAL GAS: **NICOR**

- To report a gas leak, call **1-888-642-6748**.

ILLINOIS POISON CONTROL CENTER: **1-800-222-1222**

Other Information

ADVERTISING RATES – NWTBA PUBLICATIONS

<u>Cover</u>	<u>Inside Pages –</u>	<u>Inside –</u>	<u>Ad Size</u>
<u>All 6 Issues</u>		<u>One Issue</u>	<u>(inches)</u>

Newsletter (6 bimonthly issues – every two months – per year)

Full page	\$500	\$360	\$60	7-3/4”h x 6”w
½ page	\$250	\$180	\$30	3-3/4”h x 6”w
¼ page	\$125	\$90	\$15	3-3/4”h x 3”w

Classified Ads: \$1.00 for first 10 words, plus 5 cents/word thereafter (no charge for telephone number).

To place a newsletter ad, call Owen Wavrinek, 630-800-1017

Annual Directory (one issue – January or February of each year)

Full page	\$360	---	\$300	7-3/4”h x 4-3/4”w
½ page	\$180	---	\$150	3-1/2”h x 4-3/4”w
¼ page	\$90	---	\$75	3-1/2”h x 2-1/4”w

To place a directory ad, call Owen Wavrinek, 630-800-1017

ANIMAL CONTROL

The Will County Animal Control Ordinance prohibits any dog from running at-large and requires all dogs & cats to be vaccinated against rabies. Will County Animal Control will pick up stray animals M-F from 8:30 a.m. to 4:30 p.m. The owner of the animal, if identified, has to pay a fine for having it picked up, pay for boarding at an animal shelter, and show proof of vaccinations. If no owner is identified, the animal is humanely destroyed if no new home can be found for it within 7-10 days.

Office: 1200 S. Cedar Road, New Lenox, Ill. **815-462-5633**

BUILDING PERMITS/PLANS/INSPECTIONS

Will County Building Division, 58 E. Clinton, Joliet: **815-727-8634**
– Development Review/Land Use Department **815-727-8850**

BUSES TO/FROM NAPERVILLE TRAIN STATION

Pace provides **weekday (only)** bus service to and from the Burlington Northern/Amtrak train station in Naperville. **Bus Route #683**, which starts and concludes in the Ashbury subdivision and goes on Flambeau

Drive in Springbrook Crossings, will take you to meet trains that depart from Naperville at 6:20, 7:06, 7:40, and 8:00 a.m. and pick you up from the trains that depart Chicago at 3:58, 5:00, 5:22, & 5:45 p.m. Also, late shuttle buses meet the 6:14, 6:52, and 7:40 p.m. trains from Union Station in Chicago.

The “exact-change” bus fare is \$1.75 (one way) for adults, and 85 cents for children 7-11 (under 7 w/adult, FREE – maximum of two free/adult), persons with disabilities (with RTA Reduced Fare Card/Permit), and for students with school ID (going to/from school on school days only).

Senior citizens (over 65) pay a reduced fare (on Pace, CTA & Metra) with a Senior Reduced Fare Card/Permit. For more information on Pace bus routes, call 1-847-364-7223, 8 a.m. to 5 p.m. M-F, or go to www.pacebus.com For the RTA Travel Info Center, call **836-7000**.

CABLE TELEVISION

Comcast (1-866-594-1234) provides cable TV services in unincorporated Wheatland Township. However, if you live on Mayfield Court or on the north side of Knoch Knolls Road, you also may have option of getting service from Wide Open West Cable/Internet (W.O.W.) at 1-866-496-9669.

CHAMBER OF COMMERCE

When you need to locate a product or service in the Naperville area, call **355-4141**, M-F, 8 a.m. to 5 p.m., or visit www.naperville.net

CURFEWS

In unincorporated Wheatland Township and Will County, the curfew for 13-, 14- and 15-year-olds is 9 p.m. (to 6 a.m.) Sunday through Thursday and 11 p.m. (to 6 a.m.) Friday & Saturday. For 16- and 17-year-olds, the curfew is 10 p.m. Sunday through Thursday and Midnight Friday and Saturday. If you're under 12, the curfew is 8 p.m. M-Th and 10 p.m. F-S.

In the City of Naperville, the curfew for anyone under 17 is 11 p.m. Sunday through Thursday and 12 Midnight Friday and Saturday. And in the City of Aurora, the curfew for teens under 15 is 10 p.m. seven days a week; and for 16- and 17-year-olds, it is 11 p.m. Sun. through Thurs. and 12 Midnight Friday and Saturday. During the above curfew hours, all young people must be accompanied by a responsible adult, parent or guardian who is 21 or older. Also, a 16-year-old's driver's license is not valid if the driver is in violation of the curfew hours.

DRIVER'S LICENSE CENTER

The Illinois Secretary of State's Driver's License Center in Hobson West Plaza (75th Street and Naperville-Plainfield Road) is open from 8 a.m. to 5:30 p.m. Tuesday - Friday, and 7:30 a.m. to noon Saturdays. The License Center is closed Sunday and Monday. In addition to driver's license exams and renewals, the facility sells license plate renewal stickers over the counter. Telephone: **1-312-793-1010**.

GARBAGE, RECYCLABLE, & YARD WASTE COLLECTION

You can have your household garbage & recyclables (glass, plastic, metal, etc.) picked up either by Republic Waste Services (formerly BFI or Allied) (892-9294) on Wednesdays or by Groot Industries/Crown (587-5673 or 1-877-775-1200) or by Waste Management (898-0980) on Thursdays.

Holiday-week Pick-up: If New Year's Day, Memorial Day, July 4, Labor Day, Thanksgiving or Christmas falls on or before your regular pick-up day, your pick-up will be a day later than usual.

Recyclables should be put in a plastic recycling bin. Also, large appliances and other household items will be picked up (an extra fee may be charged, depending on the item), but you must call your collector to make special arrangements.

In the case of yard waste (grass and small-brush clippings, weeds, leaves, etc.), only Republic and Groot provide this service – from April through November. Both provide a special 95-gallon container with wheels.

Brush Pick-up, Free Mulch

The Wheatland Township Highway Department now provides brush pick-up services during **seven** weeks of the spring, summer **and** early fall.

In 2014, brush will be picked up during the weeks of April 14-18, May 12-16, June 16-20, July 14-18, August 11-15, September 15-19, and October 20-24.

All branches and other brush must be out by the "curb" before 7 a.m. on the first day of each designated week. (But it will continue to be picked up into the following week, if necessary.) Place the brush as neatly as possible – cut ends toward the street and parallel to each other. [NOTE: Do **NOT** cut branches into short pieces; long branches work best. Also, there should be **no evergreens** and **no trimmings, small twigs or**

snippings, clippings, roots (they can hide stones), bags or cans filled with grass clippings/leaves, or tied bundles.]

The brush is turned into wood chips, which are available free of charge to township residents – for mulching or other purposes. To place an order (by the truck load only), call **717-0092** between the hours of 10 a.m. and 2 p.m. Monday through Friday.

Burning of Leaves and Other Yard Waste

According to state law, you cannot burn leaves or other yardwaste within 1,000 feet of a city or village that prohibits leaf-burning (such as Naperville). However, in the case of those unincorporated Wheatland residents who are able to comply with this law (by burning 1,000+ feet from incorporated Naperville), a Will County ordinance prohibits such burning within 50 feet of “any neighboring structure.” Also, Naperville Fire Protection Dist. officials state that you can burn leaves/lawn refuse *only* as long as:

- It comes from your (and only your) property,
- You stand guard while the fire is burning and put it out when you leave,
- A water supply (hose) is ready to use in case the fire accidentally spreads, **and**
- No one complains.

But if someone **does** complain (perhaps due to asthma/other health problems), you will be asked to put out your fire and could be issued a citation by the County Land Use (**815-727-8834**) or the Sheriff’s (evenings, weekends) Department – which also could mean paying a fine. In any case, **being a good neighbor is the best policy**. So, please try mulching, composting and/or bagging, instead of burning.

HOUSEHOLD HAZARDOUS WASTE, OLD TIRES

If you have hazardous waste materials (oil-based paint, solvents, fuels, pesticides, cleaning products, etc.), you can drop them off for proper disposal at Naperville’s Hazardous Waste Collection Site – located behind Fire Station # 4, 1971 Brookdale Road (just east of Route 59). The site is open 9 a.m. - 2 p.m. Saturdays and Sundays **ONLY**. Do **NOT** put such waste items in with the regular trash. Call **420-4190**.

Old Tires, Electronic Equipment

While **NEITHER** old tires nor electronic equipment are accepted at the

above site, Will County schedules special days at several sites for their disposal. Also, county contractor Vintage Tech Recyclers will pick up electronics at your front door (no charge) – call **866-631-1707**. Remember, **a state law bans the disposal of electronics in Illinois landfills.**

JULIE (locating buried utility lines)

If you're going to be digging in your back yard, state law requires that you establish where electric, gas, telephone, and TV cable lines are buried by calling **JULIE** (Joint Utility Locating Information for Excavators) at **8-1-1** at least 48 hours in advance, not including week-ends and holidays. Someone from Commonwealth Edison, NICOR (gas), and the telephone/cable companies will come to your home and mark where their underground lines are buried (using color dyes/flags) – free of charge. There are stiff penalties for not complying with this requirement.

LANDSCAPING, GARDENING QUESTIONS??

- Lawn care – Call **Scott's Consumer Service HELP Line – 1-800-543-TURF (8873)** – 8 a.m. to 5 p.m., Mon. - Fri.
- Trees and shrubs – Call **Morton Arboretum's Plant Clinic – 719-2424** – 11 a.m. to 3 p.m. Mon-Fri (winter), 10 to 4 in season
- Lawns, trees, shrubs, flowers, fruit & vegetable gardens and related pests, diseases – Call the **University of Illinois Extension Service's Master Gardener Answer Line – 1-815-727-9296**, 9 a.m. to Noon and 1 to 3:30 p.m., Monday through Friday, April through October.

LIBRARIES (Naperville Public)

95th Street Library, 3015 Cedar Glade Drive, Naperville ... **961-4100**

Nichols Library, 200 W. Jefferson Street, Naperville **961-4100**

Hours: 9 a.m. to 9 p.m. M-F, 9 a.m. to 5 p.m. Saturdays, 1 to 9 p.m.

Sundays during the school year and 1 to 5 p.m. the rest of the year.

You can obtain a **non-resident** card. But you must pay an annual fee that is based on the equalized assessed valuation of your residence (this only means **you pay the same (no penalty) as incorporated Naperville taxpayers**). Bring in your current tax bill & ID to apply for card.

NAPER SETTLEMENT (420-6010 or www.napersettlement.com)

Located at 523 S. Webster Street (adjacent to Naperville Central High School), this living-history museum tells the story of daily life in Naperville as it changed from a simple frontier outpost to a busy turn-of-the-century community. It features 30 historical buildings

(including the Martin Mitchell mansion, a school, church, blacksmith shop, stone carver's shop, carriage house, post office, Fort Payne and several others), as well as costumed villagers and many annual events (e.g., maple sugaring days, Civil War encampment/ reenactment, a Victorian wedding, Christmas Memories events) and special exhibits (e.g., arts and craft fairs, antique auto show).

This 12-acre village comes to life during the summer season (April 1 - October 31), when you can enter the buildings and meet costumed interpreters who will share the experiences of daily life, work and celebration in a 19th century midwestern town. Also, you can walk the grounds and talk to kids involved in 19th century children's activities.

Summer hours are 10 a.m.-4 p.m. Tuesday through Saturday (closed on Mondays) & 1-4 p.m. Sundays. The admission fee is \$12 for adults, \$10 for seniors (62 and over), & \$8 for youths (4-12). (*Children under 4, City of Naperville residents, & members are free.*)

During the winter season, the village building interiors are closed to the public. However, you can go on a self-guided audio tour of the village grounds and stop by the Visitor Center, where you will find a changing exhibit hall & award-winning inter-active exhibit called "Brushstrokes of the Past...Naperville's Story." Winter hours are 10 a.m. to 4 p.m. Tuesday-Friday. Admission is \$5.25 for adults, \$4.75 for seniors, and \$4 for youth (4-17).

NOTARY PUBLIC

Call Wheatland Township Administrative Assistant Carolyn Rominger for an appointment (331-229-3917) or go to a local financial institution such as Oxford Bank (305-4200) or PNC Bank (305-6100).

PASSPORTS

You can get passport forms and process them at the main U.S. Post Office (1750 W. Ogden Ave.) – 8:30 a.m. to 4 p.m. Mon. - Sat., and at the Book Road branch (3075 Book Road) – 9:30 a.m. - 4:30 p.m. Mon. - Sat.

PHYSICIAN/DENTIST REFERRAL SERVICES

Edward Hospital, Naperville	527-6363
Rush-Copley Memorial Hospital, Aurora	978-6700
Advocate Health Care Advisor, Health Facts	1-800-323-8622
Dentists	1-800-DENTIST (336-8478)

PLANETARIUM FAMILY NIGHTS

The planetarium at Waubonsie Valley High School (2590 Ogden Ave., Aurora) offers 45-minute public programs – Family Nights – first Friday of each month at 7 p.m. (Oct.-Apr.) Admission is \$2.00. For schedule/more info, call **375-3247** or visit the website at <http://planetarium.ipsd.org/index.htm>

POST OFFICE

Main Post Office: 1750 W. Ogden Ave., Naperville 717-2662
Hours: 7 a.m.-7 p.m. M-F, 7 a.m.-5 p.m. Sat, 11 a.m.-4 p.m. Sun

Book Road Post Office: 3075 Book Road 922-9539
Stamps/supplies; package mailing, mail boxes: *9-6 p.m. M-F, 9-5 Sat*

RETIREMENT PLANNING

University of Illinois website: www.retirewell.uiuc.edu

SCHOOL: FIRST/LAST DAYS, CLOSINGS, EARLY DISMISSALS

The **first day of the 2014-15 school year is Tuesday, August 26, and the last day is scheduled to be June 3, 2015.** In the case of school closings, District 204 announces them by 6 a.m. via:

- A Connect-ED phone call to parents/guardians
- Information posted on the district's website at <http://www.ipsd.org>
- Local television and radio stations (see below)
- Emergency Closing Center's website at <http://www.emergencyclosingcenter.com/ecc/search.jsp>
- A message on the district's information line at **630-375-3015**
(Please do not call your individual school)

If schools are not closed, it is ultimately the responsibility of parents and guardians to decide if the weather conditions will safely allow their children to attend school. If children are kept home due to weather conditions, it will count as an excused absence.

With regard to emergency school closings or early dismissals, you should listen to radio stations such as WGN (720 AM) or WBBM (780 AM); or watch television channels 2, 5, 7, 9, 32, or CLTV (cable)

SCHOOLSHARE – ONE CAUSE

Raise funds for your school(s) while you shop. Register online at: www.schoolshare.com and www.onecause.com

SENIOR CITIZEN SERVICES

The Naperville Park District offers a variety of classes, movies, day and overnight trips, and other activities for people over the age of 55. These activities are based in the Alfred Rubin Riverwalk Community Center, 305 W. Jackson Avenue, Naperville. The center’s information desk is open from 8:30 a.m. to 3:30 p.m. Monday - Friday. For more info, to register for a class/special event, or to be placed on the senior services mailing list, call **848-3613 or 848-3615**.

Wheatland Township has a monthly **Seniors Luncheon** on the **third Wednesday of each month (except January and February) at Noon at the Wheatland Salem Church, 1852 W. 95th Street (at Book)**. Bring a dish to pass. Also, the **Senior Services Center of Will County** offers many programs, activities, classes and volunteer opportunities for adults over age 60. For more information, call **1-815-723-9713**.

In addition, there is a **Meals on Wheels** program in Will County for those over age 60. For more info, call **1-815-740-4225**.

SNOWPLOWING, ROAD CONDITION INFO

During a winter storm, call **717-0092** for info about snowplowing or the condition of subdivision and other roads in Wheatland Township.

TRAINS AND BUSES

METRA/AMTRAK train, Pace bus & CTA bus schedule info:

- METRA/BN** commuter trains (Naperville station) **355-4409**
- AMTRAK** train information (Naperville station) **357-9114**
- RTA/Pace** Travel Info Center – 5 a.m. to 1 a.m. daily..... **836-7000**

WEBSITES

The following websites provide info about area services/attractions:

- **N. Wheatland Township Homeowners Assn.** – www.nwtha.com
- City of Naperville – www.naperville.il.us
- Naper Convention & Visitors Bureau – www.visitnaperville.com
- Choose Chicago (tourism) – www.choosechicago.com
- **Wheatland Township** – www.wheatlandtownship.com
- **Will County** – www.willcountyillinois.com
- State of Illinois – www.state.il.us
- Illinois Secretary of State – www.cyberdriveillinois.com
- RTA website for commuters – www.goroo.com
- Edward Hospital Health Tips – www.edward.org

The following **websites** provide info about area schools/services:

- Indian Prairie School District 204 – www.ipsd.org
- Indian Prairie Educational Foundation – www.204foundation.org
- Family Education Network
 - www.familyeducation.com – Parent-oriented info on child development and other education topics/issues.
 - www.myschoolonline.com – National network of schools, teachers, PTAs, and community groups.
 - www.teachervision.com – For teachers, by teachers.
 - www.funbrain.com – For kids and teachers.
 - www.infoplease.com – References – almanacs/encyclopedias

WELL-WATER, SEPTIC-FIELD TESTING

Call Will County’s Environmental Health Department,
323 Quadrangle Drive, Bolingbrook **679-7030**
Hours: 8 a.m. to 4:30 p.m. Mon - Fri

To test your well water for bacteria (\$20-\$25), fluorides (\$20), nitrates (\$15), hardness (\$15), first pick up a water sample bottle at this office. After sampling your water, return it in the sample bottle the same day, **before 10:30 a.m.**

WHEATLAND ATHLETIC ASSOCIATION

Established in 1977, the Wheatland Athletic Association is a volunteer, non-profit organization that provides athletic programs to more than 14,000 children (ages 5-18) and adults who live in School Dist. 204 in Aurora and Naperville – including T-ball, parent-pitch baseball and softball, instructional baseball, majors baseball, basketball, and soccer. For more info, call **978-2855** or go to www.waasports.org

YMCA of METRO CHICAGO – FRY FAMILY BRANCH

The Fry Family branch of the YMCA of Metropolitan Chicago (formerly the Heritage YMCA Group) is located at 2120 W. 95th Street (just west of Book Rd.). Open 5 a.m. to 10 p.m. Mon.-Fri., 5 a.m. to 8 p.m. Sat., and 7 a.m. to 8 p.m. Sun, the Fry Family branch has an 8-lane, 25-yard pool; double gym w/ two basketball courts; two aerobic studios; all-purpose rooms; a weight room; exercise room and equipment; co-ed whirlpool, sauna, steam room; modern locker rooms; childcare services; more.

Family memberships are available for \$81/month (plus a one-time \$120 entry fee) – which allows you/your family to use YMCA facilities throughout the U. S. (more than 2,300 facilities), including about 50

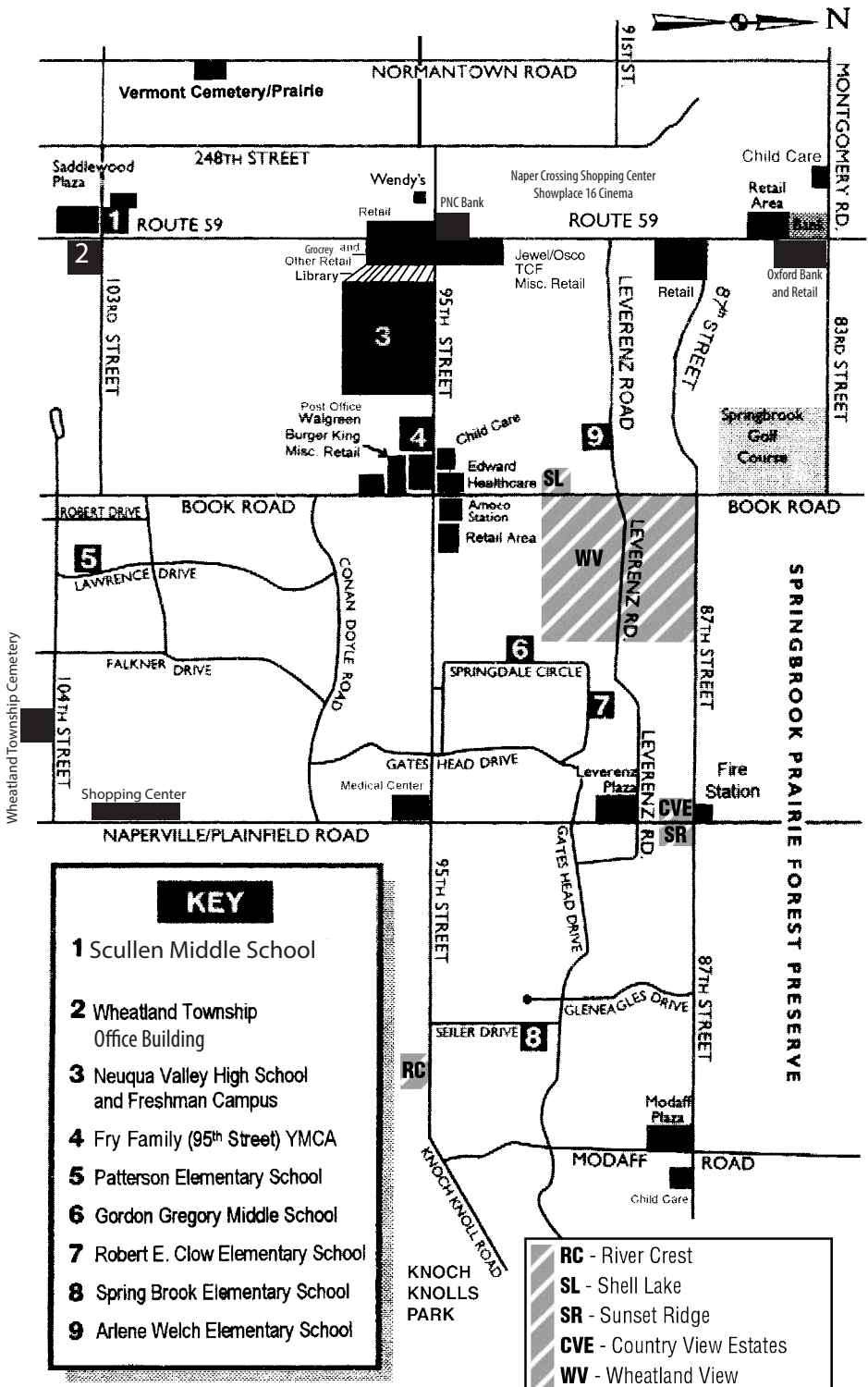
facilities in the Chicago area. Household memberships are \$95 per month (one-time fee of \$120); individual adult memberships are \$24.99/month, (one-time fee \$24.99), for ages 19-26, and \$56 per month (one-time fee of \$120), for ages 19-27+; and memberships for youths (6-18) are \$27 per month (one-time fee of \$67). Call **579-5705** or **904-9595** or visit www.heritageymca.org

In addition, the YMCA has a Sports Complex (field house), which is located at 31W290 Schoger Drive (at Normantown). It has five multi-purpose courts, a 3-lane indoor running track, fitness & exercise equipment, locker rooms & meeting rooms. Open Mon. - Fri., 5a.m-10 p.m., Sat. 8 a.m. - 6 p.m., Sun. 11 a.m. - 6 p.m. Call **585-5100**.

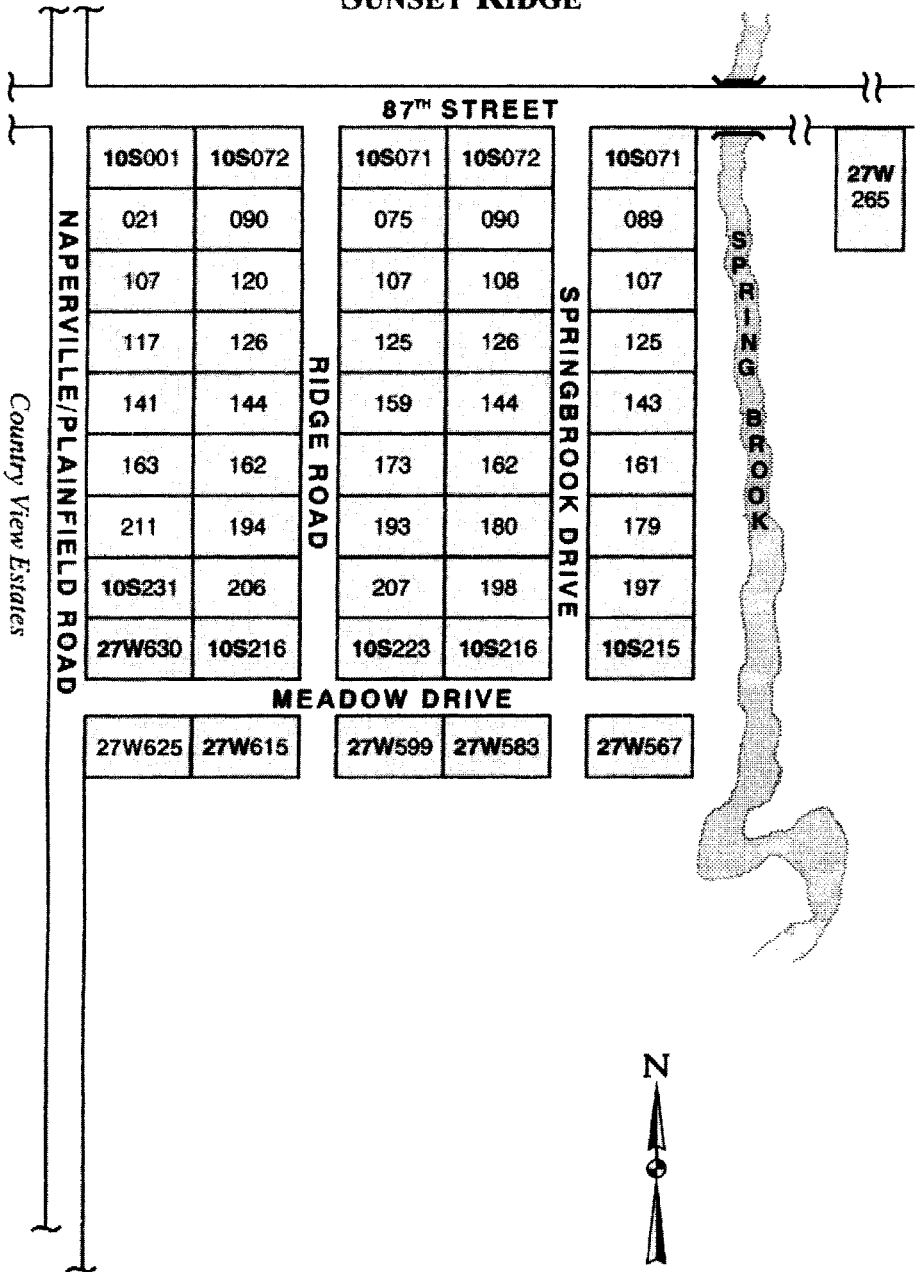
The YMCA also has a program called **Safe n’ Sound**, which provides before- & after-school activities to K-5 students at many District 203 & 204 elementary schools (including Clow and Welch) – from 6:30 to 9 a.m. and 3:30 to 6 p.m., Mon. through Fri. \$125 registration fee. \$293/month. Also, **Safe n’ Sound Days Off** is a separate child-care program that offers all-day (6:30 a.m. - 6 p.m.) supervision on most scheduled school days off & holidays, as well as snow days. Other info: Call **585-2207**.

OTHER HELPFUL PHONE NUMBERS

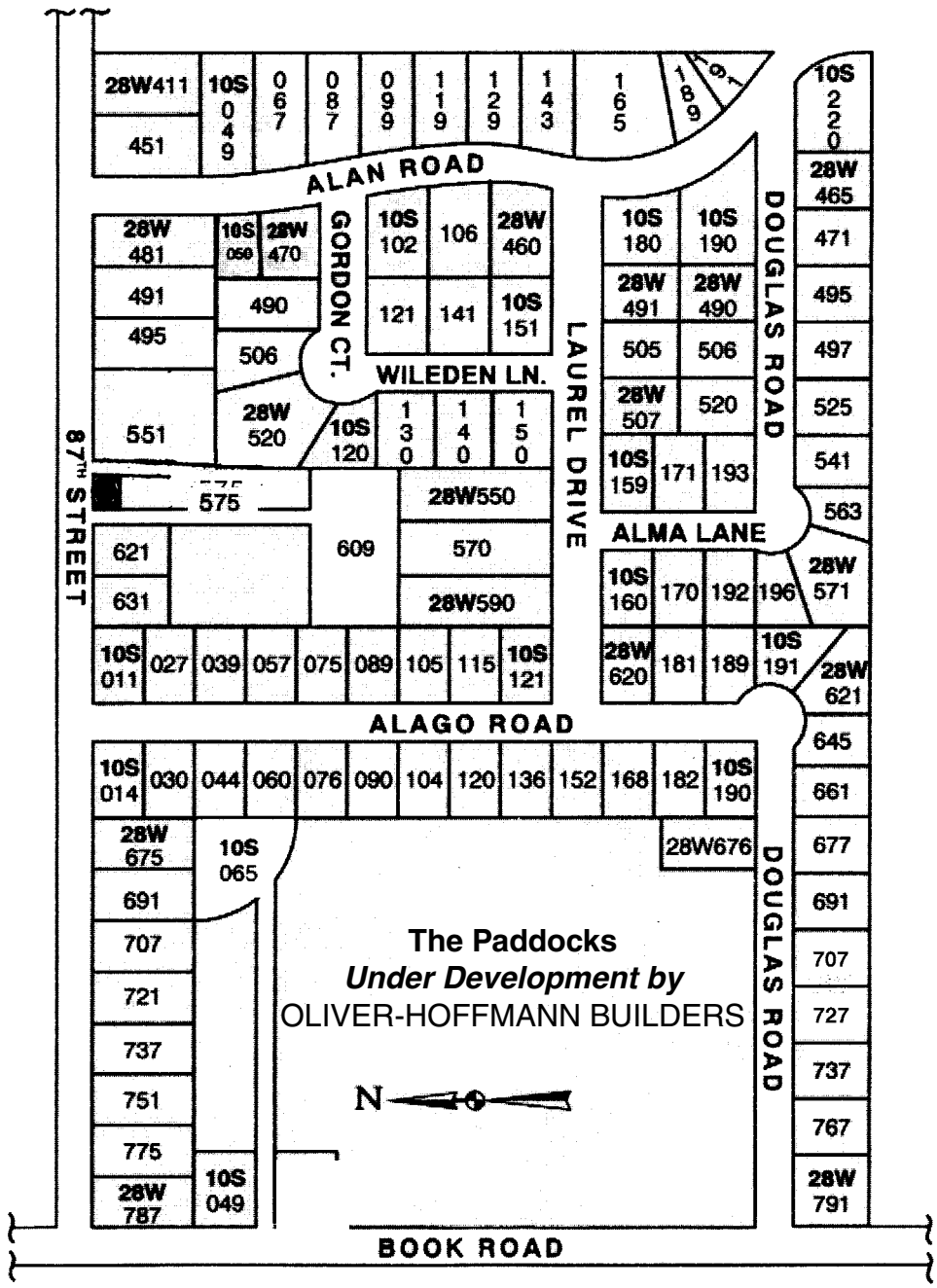
- A.A.R.P. (American Assoc. of Retired Persons)..... 1-888-687-2277**
- A.D.O.P.T. (Animals Deserving of Proper Treatment) 355-2299**
- AMVETS Discarded Clothing/Home Goods Pick-up708-388-7800**
- Child Abuse Hotline 1-800-252-2873**
- Consumer Protection//Fraud Hotline 1-800-243-0618**
- Drug & Alcohol Treatment Hotline 1-888-968-7541**
- DuPage Children’s Museum (Naperville) 637-8000**
- Flowers and Gifts (Teleflora) 1-800-835-3356**
- Free 411 Calls (business & residential listings) 1-800-FREE411**
- Illinois Department on Aging 1-800-252-8966**
- Legal Aid 1-815-727-5123**
- Lottery Numbers. 1-800-252-1775**
- MEDICARE 1-800-633-4227**
- Missing and Exploited Children 1-800-843-5678**
- Movie Phone: Show Times/Theater Locations 444-3456**
- Secretary of State Driver’s License Division 1-800-252-8980**
- Senior Citizens Advocacy (Attorney General) 1-800-243-5377**
- Social Security Administration 1-800-772-1213**
- Veterans Advocacy (Attorney General) 1-800-382-3000**
- Violent Crime Victims Assistance 1-800-228-3368**



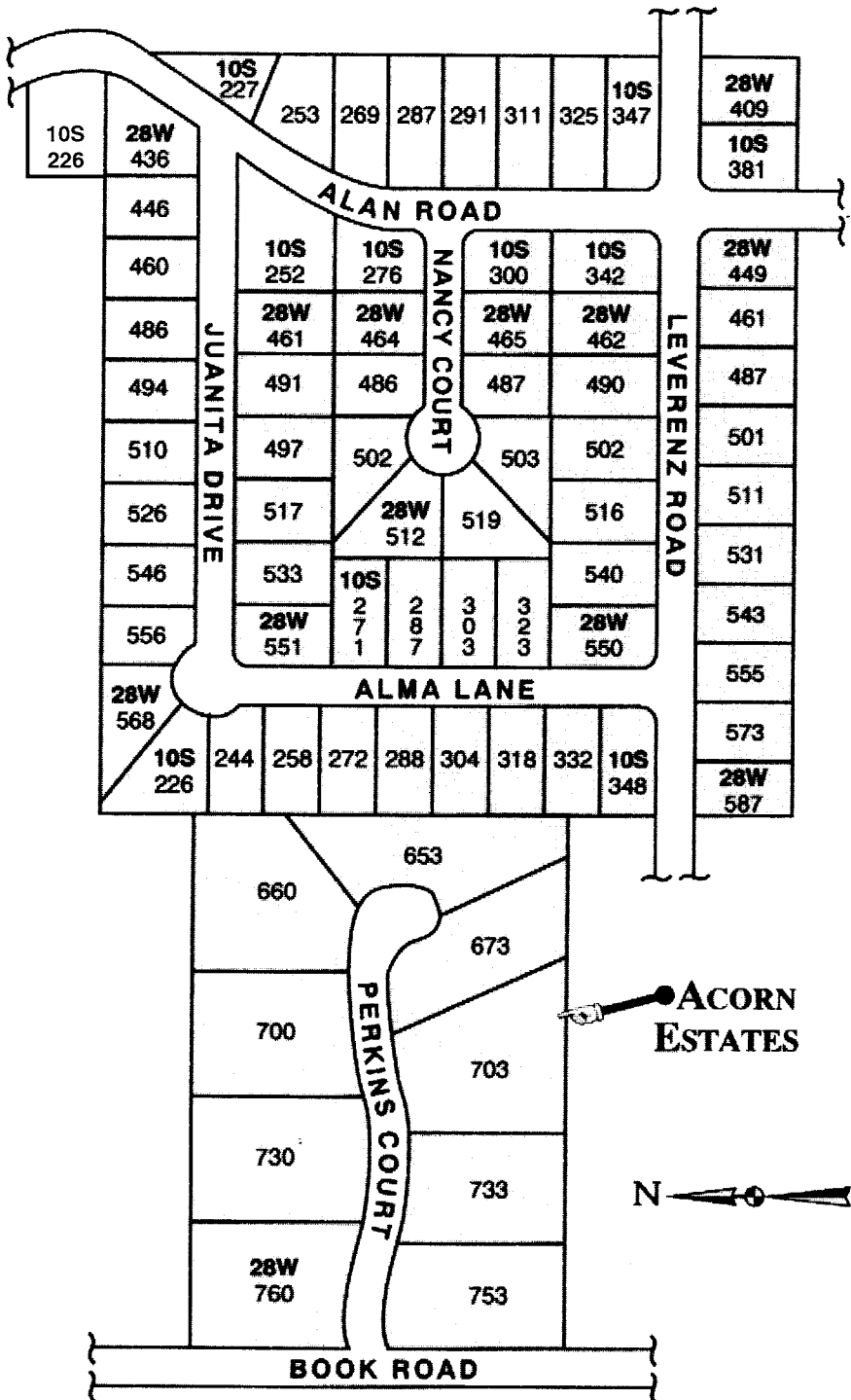
SUNSET RIDGE



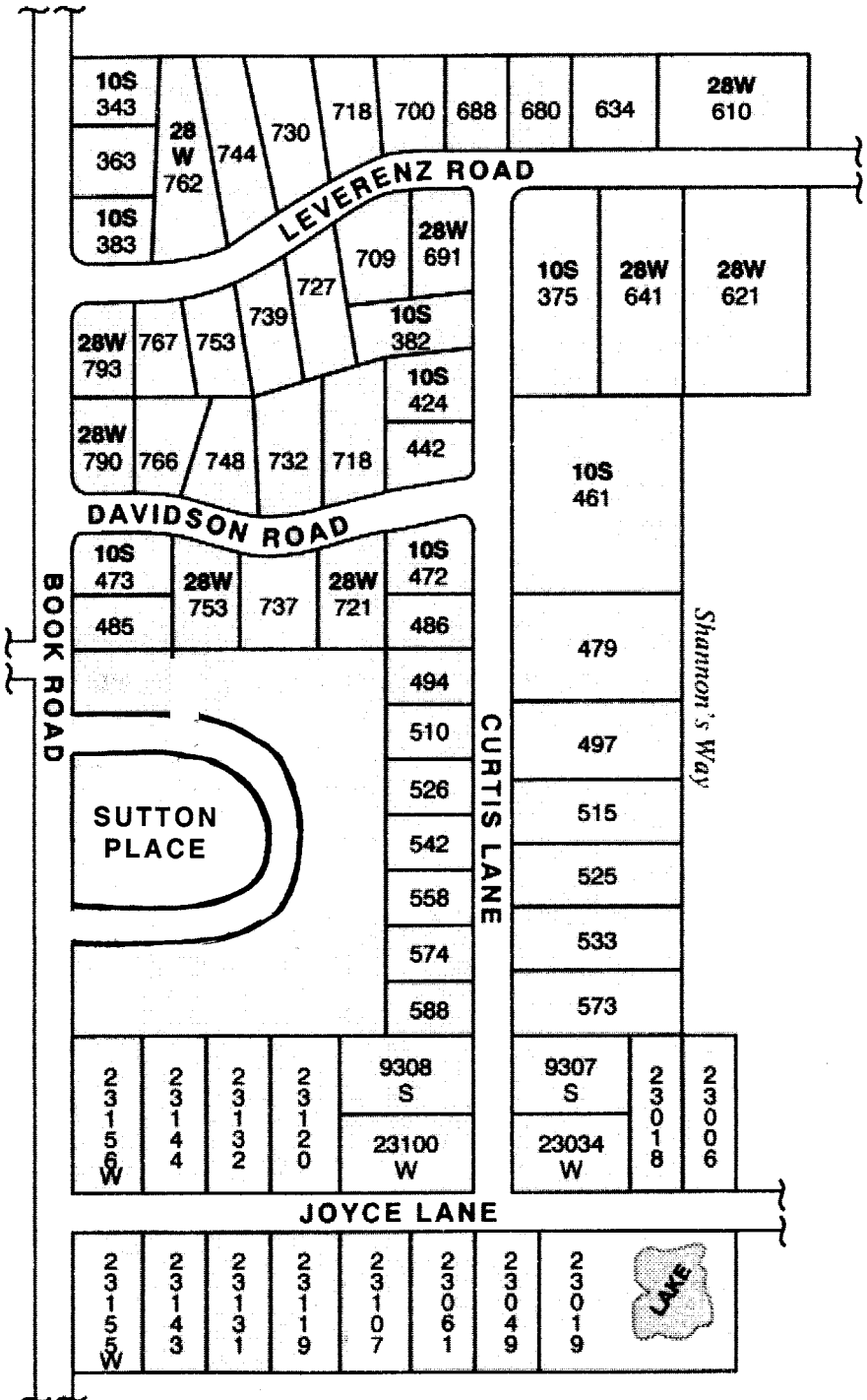
WHEATLAND VIEW (NORTH)



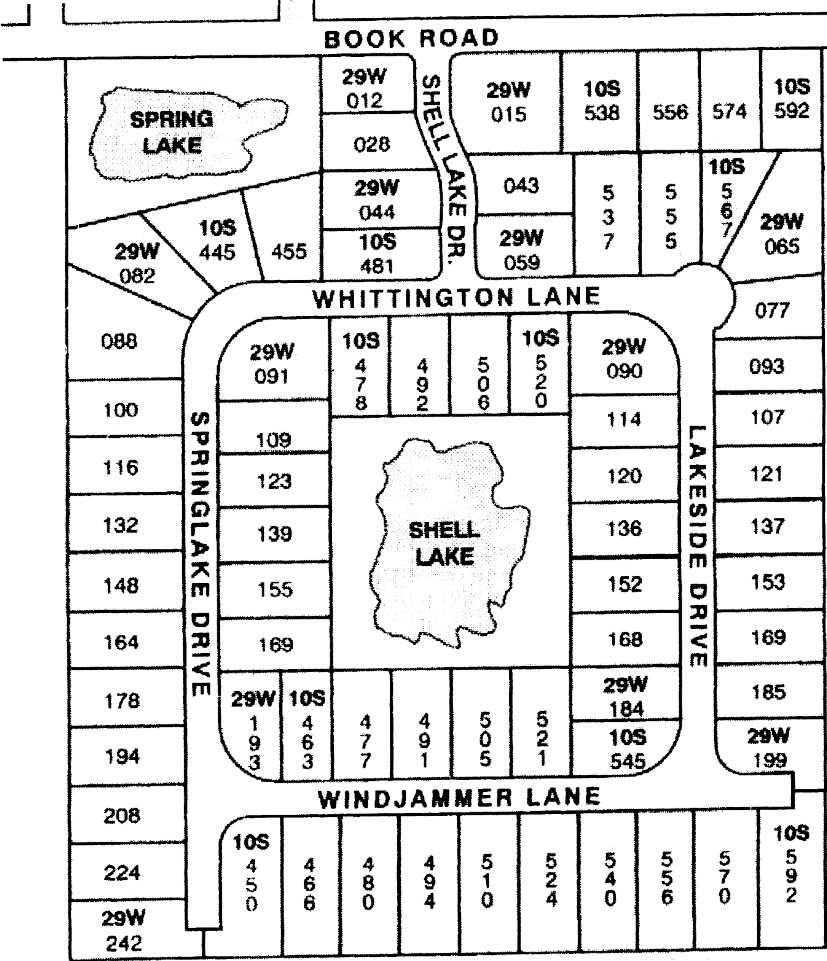
WHEATLAND VIEW (CENTRAL)



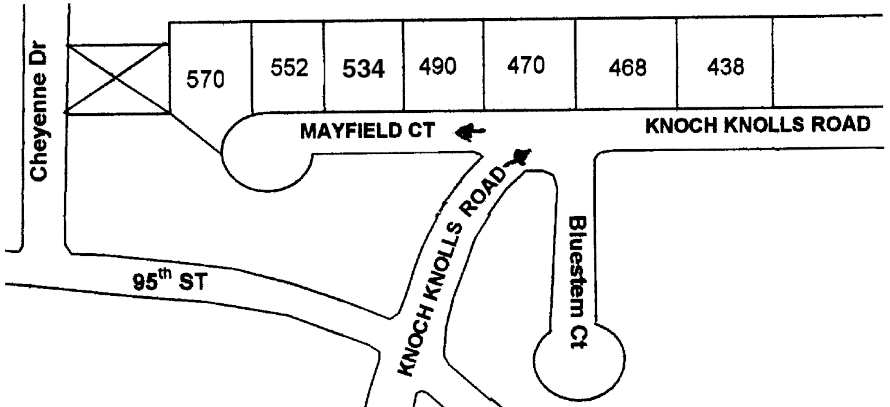
WHEATLAND VIEW (SOUTH)



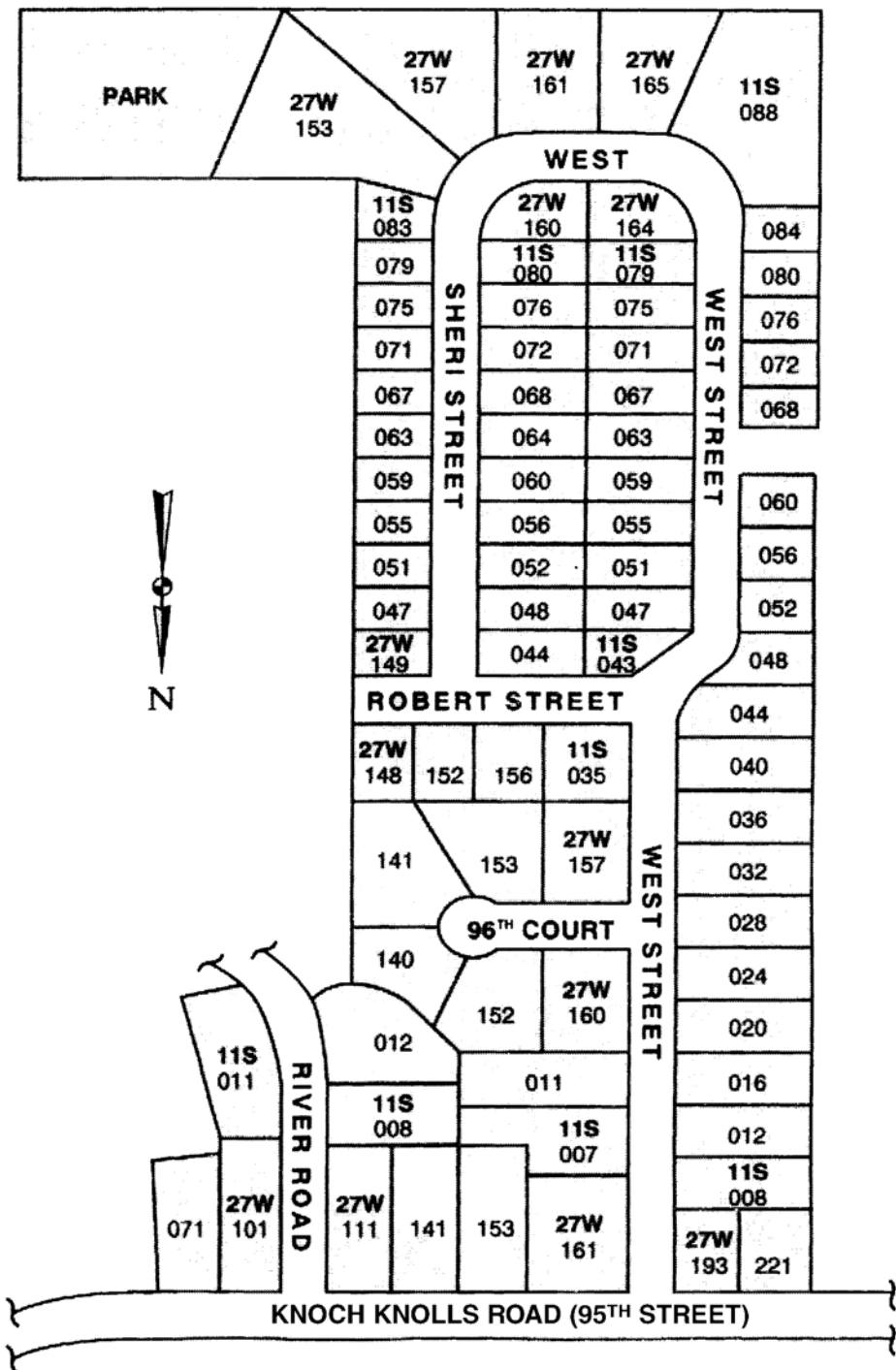
SHELL LAKE



MAYFIELD COURT & KNOCH KNOLLS ROAD



RIVER CREST





EXTERIOR DESIGNERS INC.

Financing Available
Not valid with any other offer

SIDING \$500 OFF COMPLETE JOB
All Types Maintenance Free

WINDOWS \$75 OFF THERMOTECH (per window)
Tilt In For Cleaning
Low-E/Argon Maintenance Free

ROOFING \$300 OFF COMPLETE JOB
All Type • Shingles/Flat
Illinois State Licence #104-006619

Deal directly with the owner, John Gallagher. No salesmen.

(630) 305-7909

Toll Free: (855) XTERIOR (983-7467)

www.exteriordesignersinc.com



DOG & CAT GROOMING & BOUTIQUE

Healthy Wellness Items

Hawthorne Square
1807 S. Washington St., #109
Naperville, IL 60565

Mon.-Sat. From 7:30 a.m. by Appt.
Wed. Evening by Appt.

(630) 355-9353

www.tailwaggers.info

WHEATLAND REALTY

The Cure for the Common Realtor

Located in Downtown Naperville

43 E. Jefferson Ave.
Suite 204
Naperville, IL 60540

John Guill, SFR

Realtor®

Direct 630.699.4914
Office 630.898.1388

Email: therealtorjohn@gmail.com



Dan Firks

Your Neighbor & Wheatland Specialist



“As your Wheatland neighbor, your home is treated like my home.”

-Dan Firks

Naperville Specialist & Resident
Since 1996

NapervilleIllinoisHomes.com

“★★★★★ Real Estate Agent” - *Chicago Magazine*

#1 Real Estate Broker at RE/Max of Naperville

Call today
for a free
market
analysis!

630.637.9009

www.DanFirks.com

RE/Max of Naperville - 1200 Iroquois Commons, Naperville, IL 60563
Each office is independently owned and operated.

